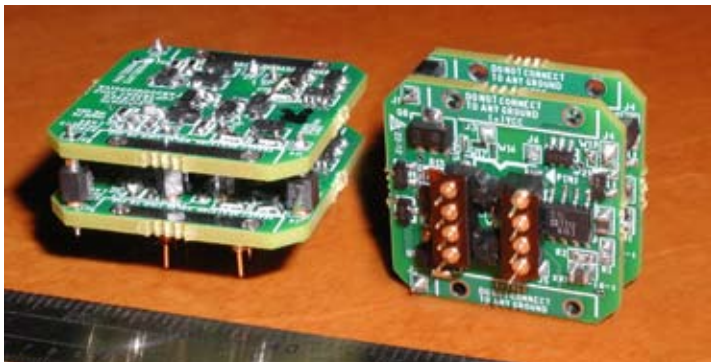


## Model 994Enh-Ticha Dual Matched LV Variant Discrete Operational Amplifier

The 994Enh-Ticha is a dual high performance discrete operational amplifier designed for professional audio applications and areas where ultralow noise, low distortion and highly linear uncolored performance is required. It was designed as a performance upgrade replacement universal dual op-amp gain block. The pinouts conform to the standard 8 pin dual in-line monolithic IC package, allowing direct replacement. See table 1. on page 6 of datasheet for typical dual monolithic operational amplifiers which can be upgraded.

The all-discrete SMT design utilizes an ultra-precision differential super-matched transistor pair specifically designed to meet the requirements of ultra-low noise and ultra-low THD audio systems. In addition to the enhanced input stage, the 994Enh-Ticha uses high performance temperature stable power supply independent current sources. Supply independent current sources allow the bias to remain locked at the optimum operating point regardless of supply voltage.

Dual matched pair temperature stable current mirrors, dual matched pair active current loads give the Model 994 it's outstanding power supply rejection performance. The enhanced low distortion Class-A output driver stage can sink or source 150mA allowing this module to drive transformers if required. Each amplifier is matched for noise, offset and distortion to within 0.1% of each other and both amplifier channels meet or exceed published specifications.



The 994Enh-Ticha op amp is a true bipolar op amp and behaves as such. It does not require a flying ground lead as do other designs on the market. Because the 994Enh is a true op amp, It can also be operated in single supply applications as long as external biasing has been implemented correctly.

### See Also:

Sonic Imagery Labs **Model 992Enh-Ticha**- Discrete Op Amp DIP8  
 Sonic Imagery Labs **Model 995FET-Ticha**- FET Discrete Op Amp 990/2520  
 Sonic Imagery Labs **Model 990Enh-Ticha**- Discrete Op Amp 990/2520

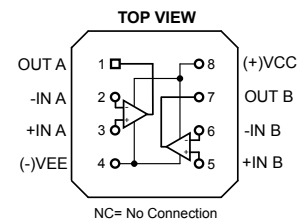
### Features:

- Ultra Low Total Harmonic Distortion, 0.0003 THD+N @ 1kHz, ±20V
- Ultra Low Total Harmonic Distortion, 0.0007 THD+N @ 1kHz, ±3.6V
- Ultra Low Noise 0.89nV/rtHz typical
- High Current Output Drive (150mA, 200mA peak)
- +26dBu Output Levels (into 600 ohms @ ±20V supply)
- +0.6dBu Output Levels (into 600 ohms @ ±3.6V supply)
- Standard 8 pin DIP Footprint
- Operates over ±3.6V to ±20V supply rails
- Lower output offset voltage than existing counterparts
- Lower input leakage current than existing counterparts
- Particular emphasis on audio performance
- Designed, assembled and produced in the USA
- 3 Year Warranty

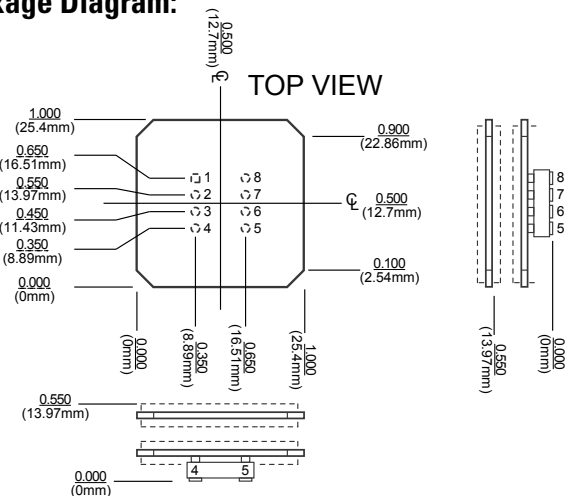
### Applications:

- Low Impedance Line Amplifiers and Drivers
- Active Filters and Equalizers
- Summing/Mixer Amplifiers
- High Performance Microphone Preamplifiers
- High Performance A/D and D/A front end Preamplifier
- High Performance D/A I-V converters
- High Current Buffer Amplifier

### Connection Diagram:



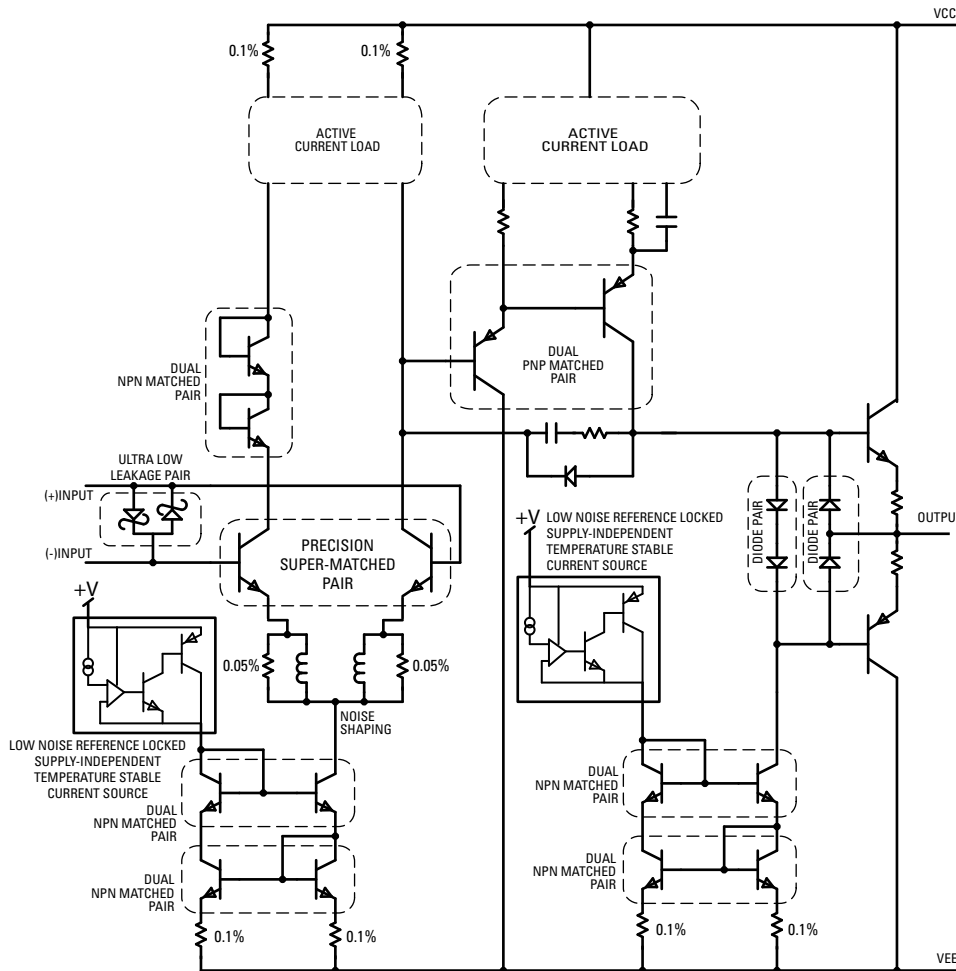
### Package Diagram:





*High Performance Audio Electronics*

**Model 994Enh-Ticha Dual Matched LV Variant Discrete Operational Amplifier**



**Simplified Schematic of 1/2 of Model 994Enh-Ticha**

Stresses above those listed under "Absolute Maximum Ratings" may cause permanent damage to the device. These are stress ratings only; the functional operation of the device at these or any other conditions above those indicated in the operational sections is not implied. Exposure to absolute maximum rating conditions for extended periods may affect device reliability.

**Recommended Operating Conditions:**

Positive Supply Voltage	VCC	+3.6V to +20V
Negative Supply Voltage	VEE	-3.6V to -20V
Signal Current (inverting mode)	lin	50nA to >200 uA



## Model 994Enh-Ticha Dual Matched LV Variant Discrete Operational Amplifier

### Mounting, Installation Options:

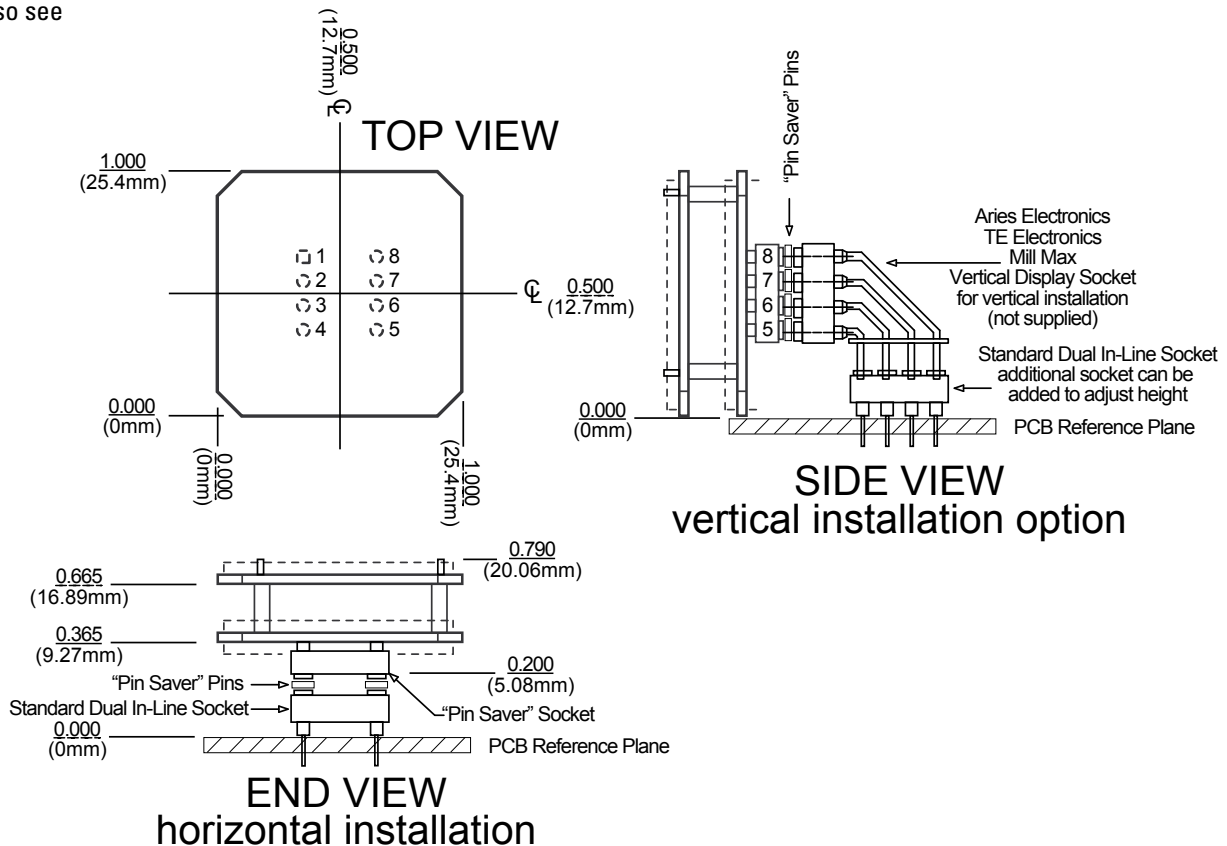
The 994Enh comes standard with a 8-pin dual in line "Pin Saver" style SMT socket and 8 gold plated "Pin Saver" pins. 4 extra pins are provided in the event that the user damages or breaks pins during installation. Utilizing the "Pin Saver" system also allows other mounting options. (See diagram below) In every mounting situation, the 994Enh operational amplifier interface is protected from accidental damage.

For the vertical installation option, many connector manufacturers can provide both vertical or horizontal right angle dip socket connectors. If additional height is required, the user can add an additional standard dual in line socket to the stack to facilitate connection to the PCB. Additionally, if the user is required to mount the 994Enh to the left or right side of the existing PCB socket, a horizontal right angle display dip socket can be used and the 994Enh is simply rotated 90 degrees as shown in the side view diagram below. (Also see

In all mounting situations, the user must keep the connection from pin 1 of the 994Enh to pin 1 of the device being replaced. Pin 1 of the 994Enh is identified on the bottom side of the PCB assembly. Incorrect installation will damage the 994Enh and void the warranty.

Pins 2, 3, 5 and 6 are the amplifiers inputs and thus the circuits summing junction. Flying leads, jumper wires or wire extenders are NOT recommended as this installation method degrades the amplifiers differential input circuits ability to reject common mode noise (degrades the CMRR specification), "pickup noise" and magnetically induced or radiated interference from transformers, power supplies or other noise sources.

It should also be noted that the 994Enh-Ticha op amp is a true bipolar op amp and does not require a flying ground lead as do other designs on the market. Because the 994Enh is a true op amp, It can also be operated in single supply applications as long as external biasing or bootstrapping has been designed correctly.

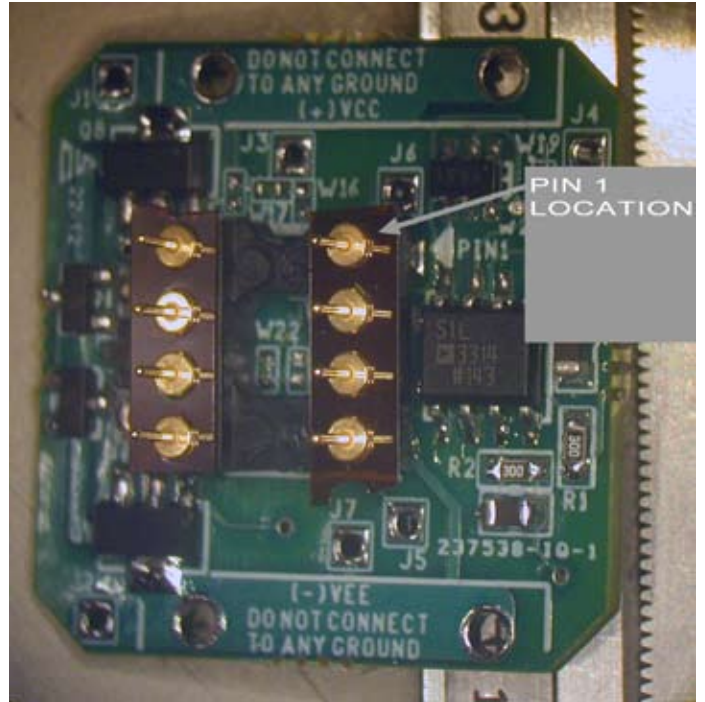
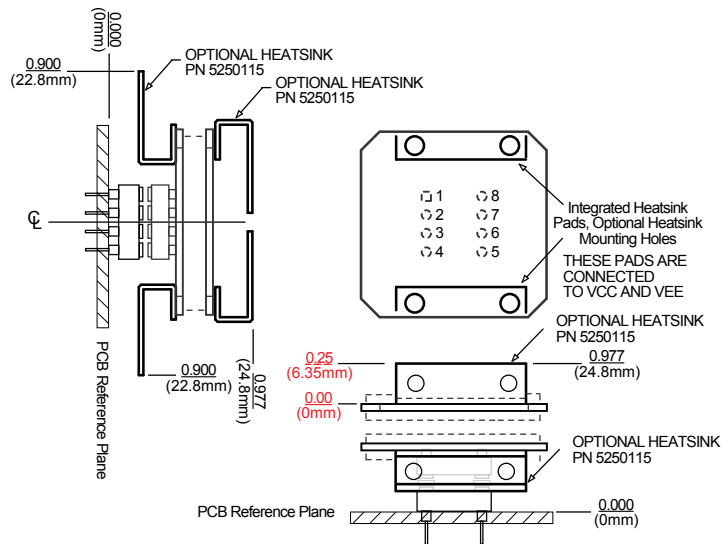


## Model 994Enh-Ticha Dual Matched LV Variant Discrete Operational Amplifier

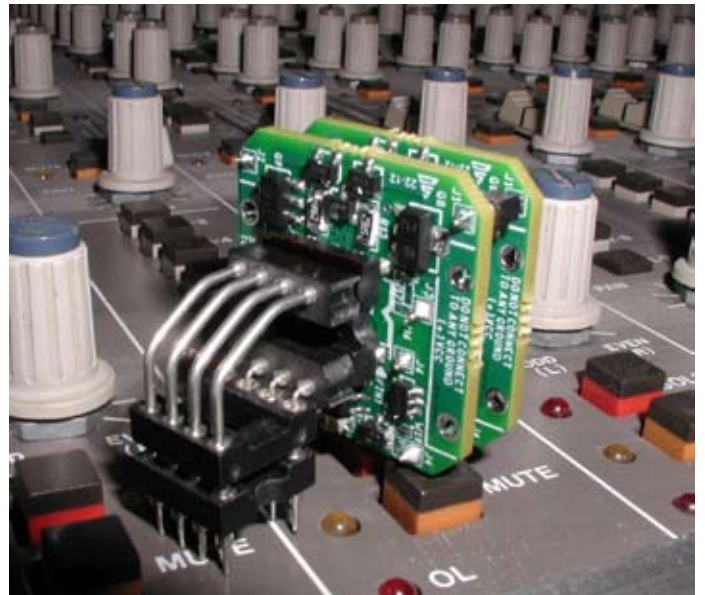
### Mounting, Installation Options:

The 994Enh discrete opamps printed circuit board integrates copper clad to the collectors of the Class A output driver transistors to dissipate heat. This cladding and the associated four holes are electrically connected to VCC and VEE. These holes should not be used to mount the 994Enh opamp unless steps are taken to insulate these surfaces from the mounting surfaces by using insulating pads and non conductive hardware.

Under normal (normal being up to 60°C / 140°F) ambient temperature conditions, the amplifier does not require heatsinks. In applications where the 994Enh discrete op amp is used to drive very low impedances, and is operating in high ambient temperature environments, Sonic Imagery Labs can provide optional heatsinks and mounting screws designed for this package specifically.



**Image 1. Bottom view of 992/994 illustrating the location of PIN1. Note silkscreen indicator. Gold pins are "PIN SAVER" pins. Included machine socket removed for clarity.**



**Image 2. Optional mounting method shown with a right angle display socket. Contact Sonic Imagery Labs for additional details.**



**Model 994Enh-Ticha Dual Matched LV Variant  
Discrete Operational Amplifier**

**Absolute Maximum Ratings**

Supply Voltage	VCC-VEE	42V
Differential Input Voltage	V <sub>ID</sub>	13.9Vrms (+25dBu) @ unity gain
Input Voltage Range	V <sub>IC</sub>	±12.5V
Power Dissipation (each amp)	P <sub>D</sub>	0.65W I <sub>q</sub> @ ±20V supply
Operating Temperature Range	T <sub>OPR</sub>	-40~85°C
Storage Temperature Range	T <sub>STG</sub>	-60~150°C

**DC Electrical Characteristics** (T<sub>a</sub>=25°C, V<sub>s</sub>=±20V unless otherwise noted)

Symbol	Parameter	Conditions	Min	Typ	Max	Units
V <sub>OS</sub>	Input Offset Voltage	R <sub>s</sub> =100Ω	-	0.22	0.45	mV
I <sub>OS</sub>	Input Offset Current	-	-	5	100	nA
I <sub>B</sub>	Input Bias Current	-	0.8	1	1.2	uA
A <sub>VOL</sub>	Voltage Gain	-3dB@43Hz	115	118	120	dB
V <sub>OM</sub>	Output Voltage Swing	V <sub>s</sub> =±20V R <sub>L</sub> =600Ω Av=10	35	36	-	V <sub>pp</sub>
V <sub>OM</sub>	Output Voltage Swing	V <sub>s</sub> =±20V R <sub>L</sub> =75Ω Av=10	34.9	35.9	-	V <sub>pp</sub>
V <sub>CM</sub>	Input Common-Mode Range	R <sub>L</sub> =600Ω	±12	±12.5	-	V
CMRR	Common-Mode Rejection Ratio	-	100	100	-	dB
PSRR	Power Supply Rejection Ratio	-	100	110	-	dB
I <sub>Q</sub>	Supply Current (Both OpAmps)	V <sub>o</sub> =0, inputs gnd, V <sub>cc</sub> =20V	32	34	38	mA
		V <sub>o</sub> =0, inputs gnd, V <sub>ee</sub> =20V	30	32	34	mA

**AC Electrical Characteristics** (T<sub>a</sub>=25°C, V<sub>s</sub>=±20V unless otherwise noted)

Symbol	Parameter	Conditions	Min	Typ	Max	Units
SR	Slew Rate	R <sub>L</sub> =600Ω	17	18	19	V/uS
SR	Slew Rate	R <sub>L</sub> =75Ω	15	16	17	V/uS
GBW	Gain Bandwidth Product	10kHz to 100kHz	-	>50	-	MHz
	Maximum Peak Output Drive Current	R <sub>L</sub> =75Ω	100	150	175	mA

**Design Electrical Characteristics** (T<sub>a</sub>=25°C, V<sub>s</sub>=±20V unless otherwise noted)

Symbol	Parameter	Conditions	Min	Typ	Max	Units
THD	Distortion+Noise	R <sub>L</sub> =600Ω 20dB Gain NonInvert @1kHz	-	0.0003	-	%
THD	Distortion+Noise	R <sub>L</sub> =600Ω 20dB Gain Invert @1kHz	-	0.0003	-	%
THD	Distortion+Noise	R <sub>L</sub> =600Ω Unity Non Inverting @1kHz	-	0.00045	-	%
e <sub>n</sub>	Input Referred Noise Voltage	Input shorted to ground	-	0.89	1.05	nV√ Hz
i <sub>n</sub>	Input Referred Noise Current	-	-	<1.0	-	pA√ Hz
PBW	Power Bandwidth	Large-signal BW R <sub>L</sub> =600Ω	-	>200	-	kHz
f <sub>u</sub>	Unity Gain Frequency	Small-signal BW at unity gain (ft)	-	10	-	MHz
Zin	Input Resistance	Noninverting Input	-	>10M	-	Ω
Xt	Amplifier to Amplifier Crosstalk	-	-	>100	-	dB
Cin	Input Capacitance	Noninverting Input	-	6p	-	F



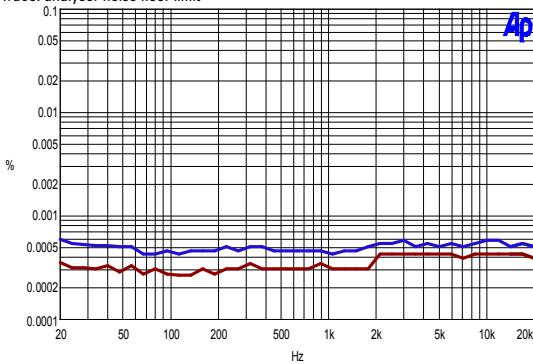
*High Performance Audio Electronics*

### Model 994Enh-Ticha Dual Matched LV Variant Discrete Operational Amplifier

#### THD+N Characteristics (1Vrms input, Vs=±20V, Ta=25°C unless otherwise noted)

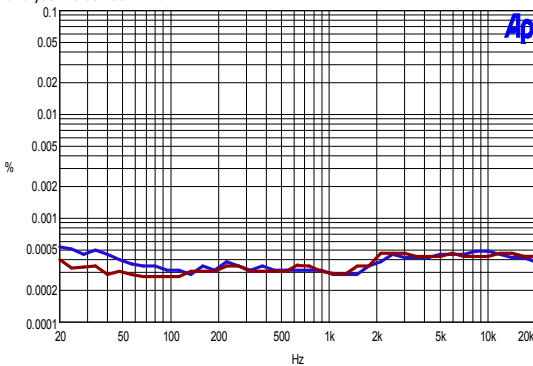
##### Total Harmonic Distortion+Noise Inverting Unity Gain vs Frequency

Blue Trace: measured 994Enh THD+N  
Brown Trace: analyser noise floor limit



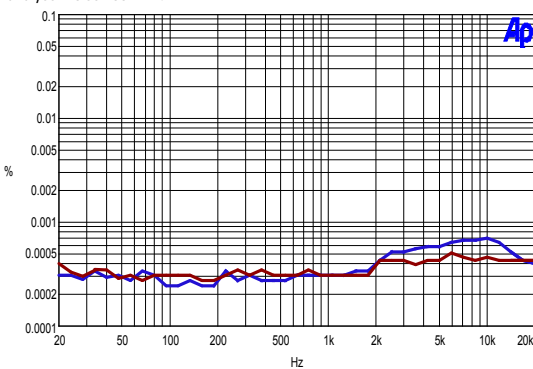
##### Total Harmonic Distortion+Noise Inverting 20db Gain vs Frequency

Blue Trace: measured 994Enh THD+N  
Brown: analyser noise floor limit



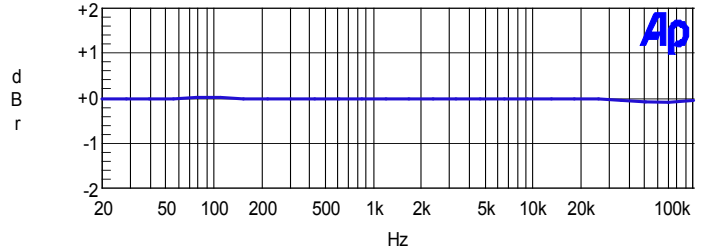
##### Total Harmonic Distortion+Noise Non-Inverting 20db Gain vs Frequency

Blue Trace: measured 994Enh THD+N  
Brown: analyser noise floor limit

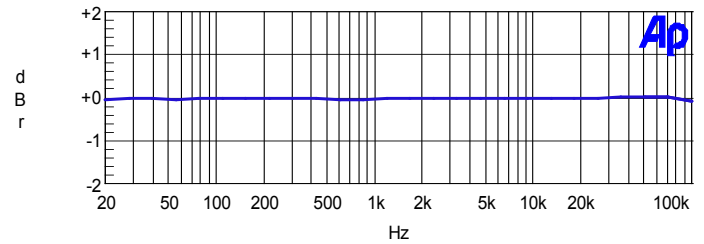


#### Gain Accuracy vs Frequency (Ta=25°C, Vs=±20V unless otherwise noted)

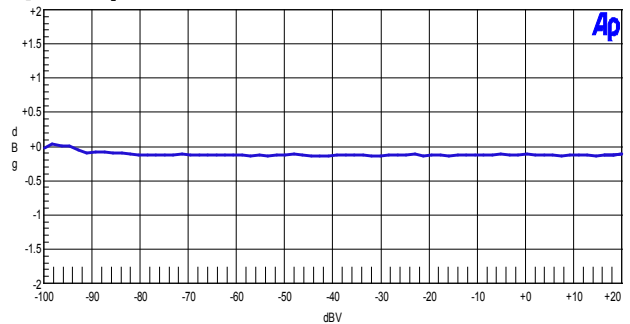
Unity (Av=1) Inverting gain vs Frequency



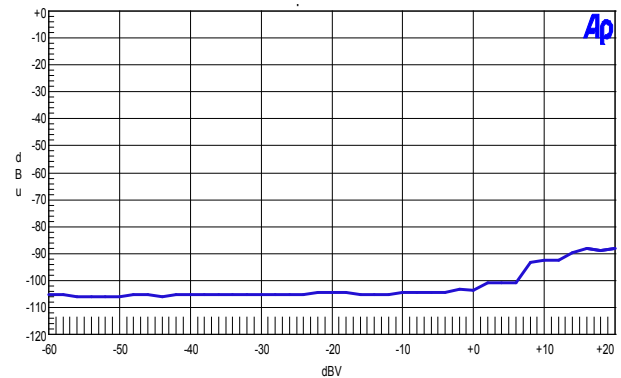
40dB (Av=100) Non inverting gain vs Frequency



#### Linearity vs Amplitude (Ta=25°C, Vs=±20V unless otherwise noted)



#### THD+N vs Amplitude (Ta=25°C, Vs=±20V unless otherwise noted)

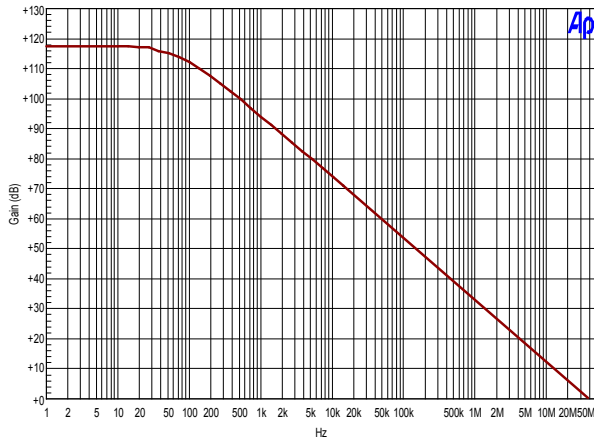




*High Performance Audio Electronics*

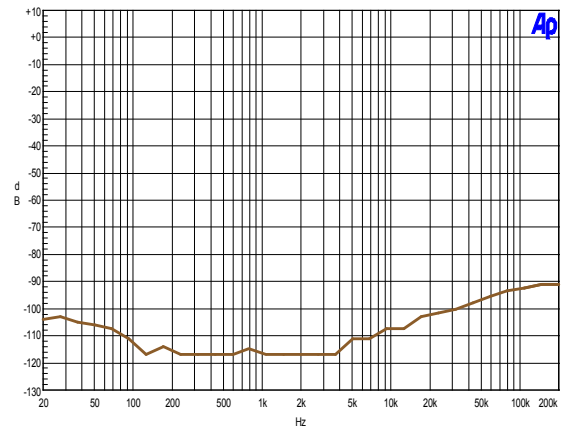
### Model 994Enh-Ticha Dual Matched LV Variant Discrete Operational Amplifier

**Open Loop Gain Frequency Response** ( $T_a=25^\circ\text{C}$ ,  $V_s=\pm 20\text{V}$ ,  $R_{load}=100\text{K}\ \Omega$  unless otherwise noted)

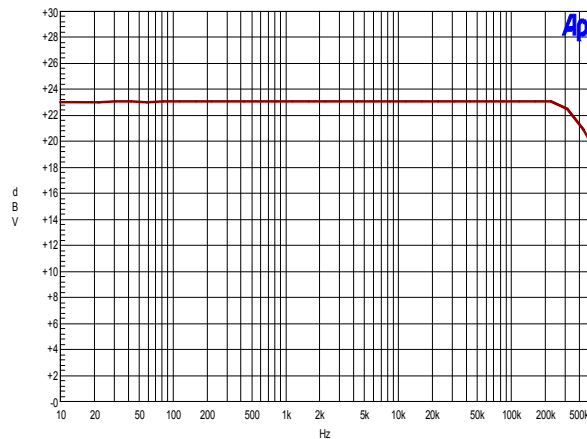


**Power Supply Rejection Ratio Characteristics** ( $T_a=25^\circ\text{C}$ ,  $V_s=\pm 20\text{V}$ ,  $R_s=0\ \Omega$ ,  $R_{load}=10\text{K}\ \Omega$  unless otherwise noted)

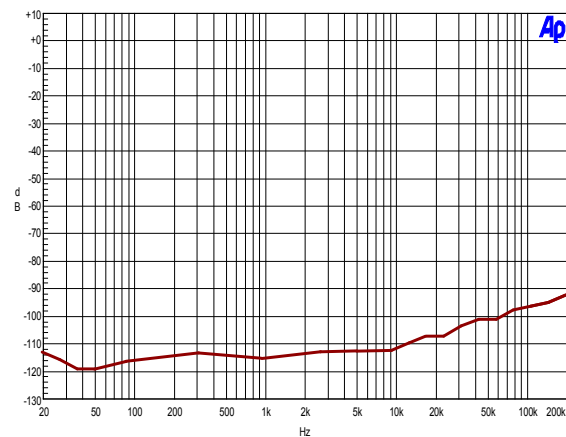
Non inverting, Unity gain ( $A_v=1$ ) vs Frequency, Positive Supply



**Full Power Frequency Response** ( $T_a=25^\circ\text{C}$ ,  $V_s=\pm 20\text{V}$ ,  $R_{load}=600\ \Omega$  unless otherwise noted)



Non inverting, Unity gain ( $A_v=1$ ) vs Frequency, Negative Supply



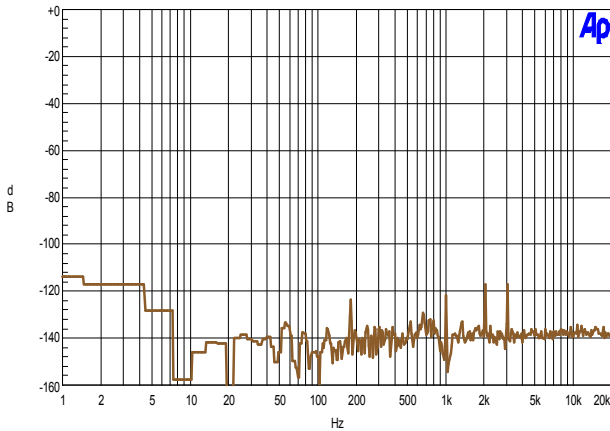


High Performance Audio Electronics

Model 994Enh-Ticha Dual Matched LV Variant Discrete Operational Amplifier

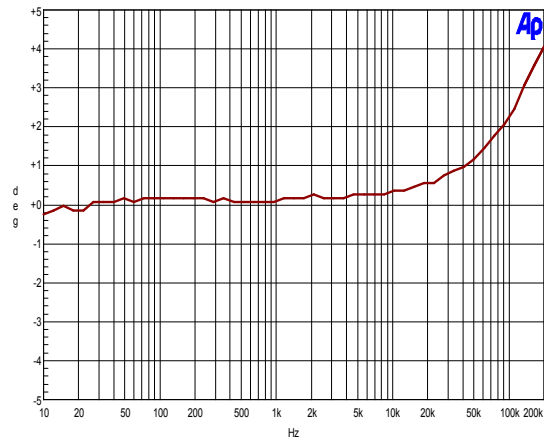
THD Residual+N Characteristics (Ta=25°C, Vs=±20V, 0dBV input, Rs=600 Ω Rload=10K Ω unless otherwise noted)

1kHz Fundamental @ 0dBV, 6dB gain (Av=2) Non inverting vs Frequency



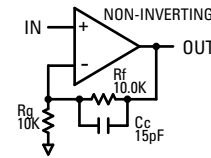
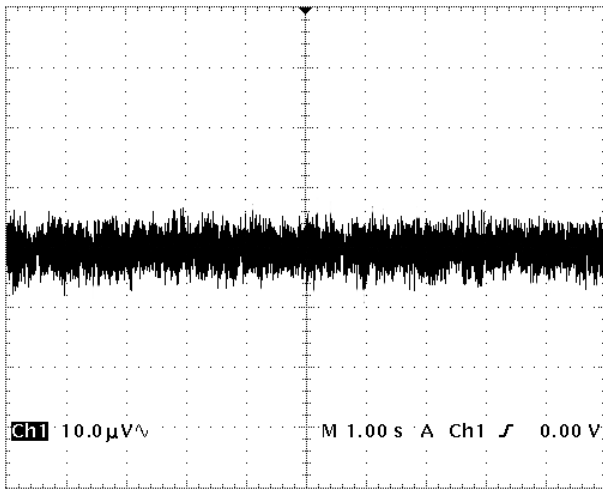
Input-Output Phase Characteristics (Ta=25°C, Vs=±20V, 0dBV input, Rs=600 Ω Rload=10K Ω unless otherwise noted)

Non inverting input 6dB gain (Av=2) vs Frequency

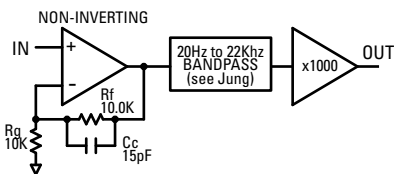
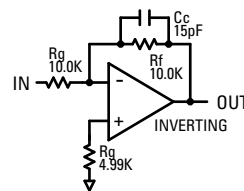
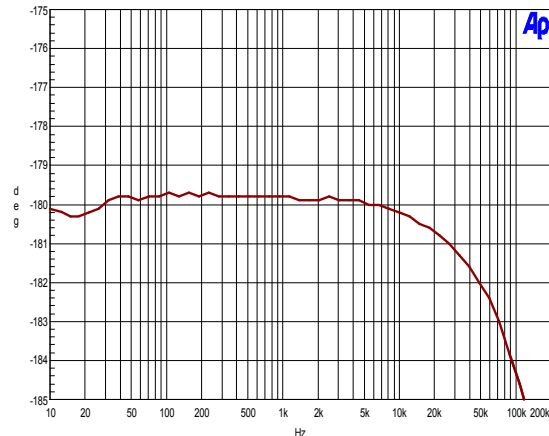


Broadband Noise Characteristics (Ta=25°C, Vs=±20V, Rs=0 Ω to gnd, Rload=10K Ω unless otherwise noted)

Non inverting, 6dB gain (Av=2) 22Hz to 22kHz NBW vs Time



Inverting input 0dB gain (Av=0) vs Frequency

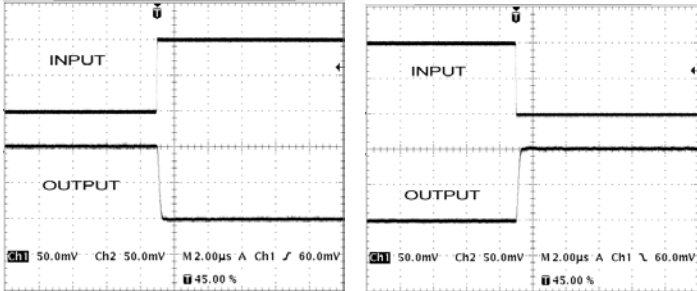




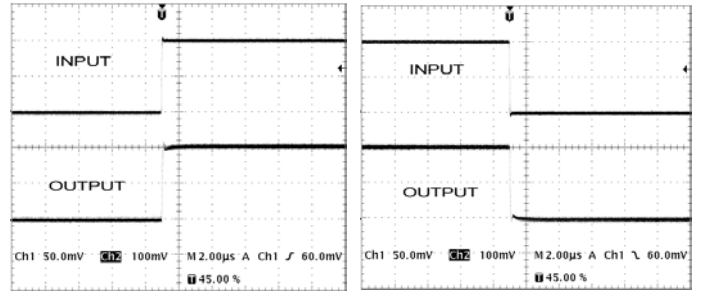
**Model 994Enh-Ticha Dual Matched LV Variant  
Discrete Operational Amplifier**

**Pulse Response**  $T_a=25^{\circ}\text{C}$ ,  $V_s=\pm 20\text{V}$   $R_L=600\Omega$

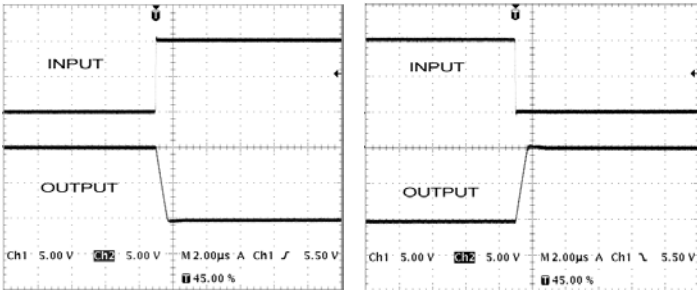
Small Signal Inverting  $A_v=Unity$



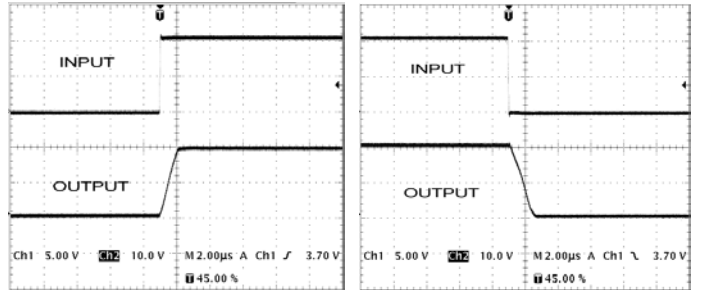
Small Signal Non-Inverting  $A_v=6\text{dB}$



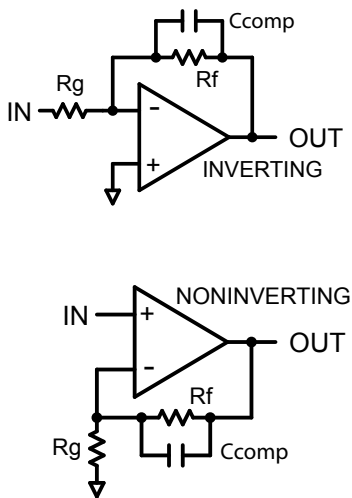
Large Signal Inverting  $A_v=Unity$



Large Signal Non-Inverting  $A_v=6\text{dB}$



**Pulse Response Test Setup**



**Table 1. Compatible Upgrade Table**

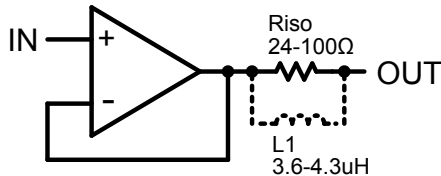
The Model 994Enh-Ticha can be used to upgrade and or replace these monolithic operational amplifier types. This list is by no means comprehensive. Contact Sonic Imagery Labs for additional information.

AD8066	NEC4520	OPA2604
AD8620	NEC4570	RC4558D
AD712	NJM2068D	RC4558P
AD827	NJM2114	TL052
C4570	NJM2214D	TL072
JRC4580	NJM4558	
JRC5532	NJM4558D	
JRC5532D	NJM4560	
JRC5534	NJM5532	
LF353	NJM4558P	
LM4562	OP275	
LM833N	OPA2132	
NE5532	OPA2134	

## Model 994Enh-Ticha Dual Matched LV Variant Discrete Operational Amplifier

### Application Notes

Low leakage film capacitors with high-quality dielectric (polypropylene or COG-NPO ceramic) should be used. Low-ESR power supply bypass capacitors with a small resistance in series with the power supply rails are essential for low noise operation. Precision low noise 1% metal film resistors should always be used. Since these components can represent high impedance, lead length and trace lengths should be minimized. Assembled circuits and PCB's should be carefully cleaned of flux residue to prevent leakage paths or other spurious behavior.



**Figure 1. Isolating capacitive loads with an resistor. The non-inductive resistor avoids resonance problems with load capacitance by isolating feedback path.**

The 994Enh is normally stable with resistive, inductive or smaller capacitive loads. Larger capacitive loads interact with the open-loop output resistance to reduce the phase margin of the feedback loop, ultimately causing oscillation.

At any loop gain setting, a feedback capacitor across the feedback resistor will aid stability. In all cases, the op amp will behave predictably only if the supplies are properly bypassed, ground loops are controlled and high-frequency feedback is derived directly from the output terminal of the 994Enh opamp.

So-called capacitive loads are not always capacitive. A high-Q capacitor in combination with long leads or PCB traces can present a series-resonant load to the op amp. In practice, this is not usually a problem; but the situation should be kept in mind.

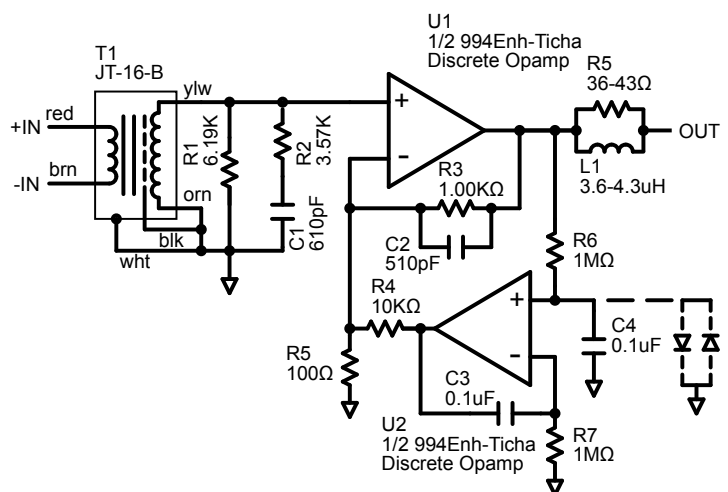
Large capacitive loads (including series-resonant) can be accommodated by isolating the feedback path from the load as shown in **Figure 1**. The resistor kills the Q of series resonant circuits formed by capacitive loads. A low inductance resistor is recommended. An inductor can also be added in parallel to Riso.

The inductor gives low output impedance at lower frequencies while providing an isolating impedance at high frequencies. Optimum values of L and R depend upon the feedback gain and expected nature of the load, but are not critical. Typical values of inductor range from 3.3uH to 4.7uH.

### Typical Applications

R1, R2 and C3 provide match and termination for the JT-16-B input transformer. The step up nature of the transformer provides 5.6dB of voltage gain. R3 and R4 set ac voltage gain of the 994Enh op-amp. Whereas,  $R3/R4+1=Av$ ,  $20\log Av=Gain_{dB}$ . Other values can be chosen depending on gain desired. C2 provides phase-lead compensation and sets the upper frequency BW cutoff point.

With multiple stages of gain, the accumulation of DC offsets of various amplifiers can lead to problems. The classical solution to decoupling the offset has been to employ series capacitors between stages. A superior method which eliminates the need for series capacitors, which has come into vogue over the last couple of decades, is the use of a servo amplifier stage, for output DC-offset elimination. The circuit shown in **Figure 2** is the basic noninverting audio preamp (U1) with a noninverting integrator feedback stage (U2) connected around it. For normal audio range input signals, the gain of this stage is defined conventionally.



**Figure 3. Transformer input mic preamp with servo.**

## Model 994Enh-Ticha Dual Matched LV Variant Discrete Operational Amplifier

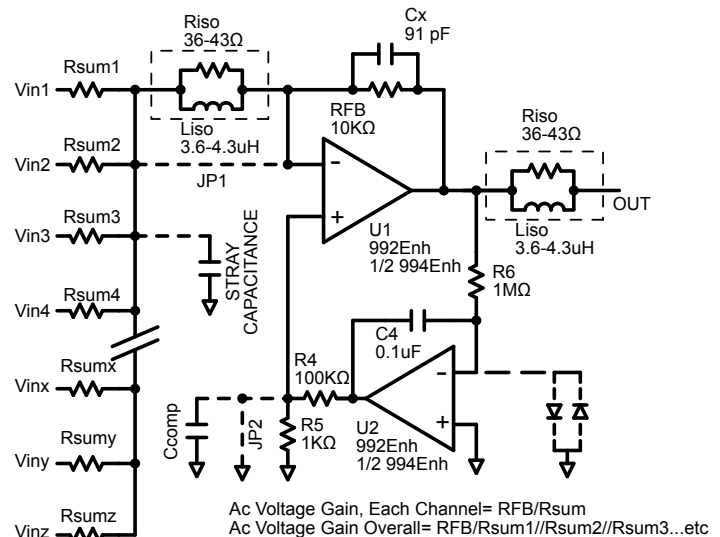
### Typical Applications (continued)

In this instance, the resistance to ground is made up of the parallel equivalent resistances of R4 and R5; basically  $A_v = 1 + R_3 / (R_4 // R_5)$ . C3-R7 and C4-R6 form the integration time constants, which are set equal in this form of integrator. The DC feedback from the U2 stage is applied to the inverting input of U1, via R4. By virtue of the integrator stages' infinite gain at DC, the overall loop will force the output of U1 to an extremely low DC level. In practice, the residual DC output offset of U1 becomes essentially the offset voltage of U2.

The DC feedback resistor, R4 is chosen to be 10X higher than R3, while the integrator time constant sets the basic low frequency rolloff point. In this example, the rolloff is set at about 0.165Hz. Low leakage clamping diodes can be added across C4 to prevent latchup. U2 should be a precision low offset voltage, low input bias current, type device similar to an AD711, 995 or 994/992.

An inverting summing amplifier with servo correction is shown in **Figure 3**; it uses the more familiar form of inverting integrator for DC offset correction. In this circuit U1 is a basic inverting gain stage, with a voltage gain of  $R_{FB} / R_{sumn}$ . The DC feedback from from the U2 integrator stage is applied to U1 through the divider R4-R5. The time constant and scaling of resistor values are the same as the circuit in **Figure 2**.

The power supply voltages should be sufficient enough to accommodate the worst DC offset of U1 that can be expected from inputs. Note that, in principal, a noninverting integrator could also be used, with DC correction applied to the inverting input junction of U1. The inverting integrator is simpler overall, however, and it eliminates one RC network. With many inputs being summed, the output of the summing amplifier could become excessive. The final value for Rsum is chosen based on the number of channels, input signal levels, maximum peak voltages, etc. If the servo (U2 R4 C4 R6) circuit is not used, the non-inverting input may be tied to ground directly, or through resistor R5. The value of this resistor should be adjusted to equal the DC source resistance of all the input resistors (Rsum) seen by the inverting input, which is the parallel resistance of all input resistors (assuming they are not AC coupled) and the feedback resistor (Rsum//RFB) When both inputs of the 994Enh see identical source resistances, the output offset voltage will be at its lowest value. This resistor can result in increased noise when compared to a grounded input. This problem can be overcome by a



**Figure 3. Summing Amplifier with servo.**

parallel capacitor (Ccomp). The capacitor value is not critical, with 0.1uF being a good starting point.

The physical terminating point or summing junction for the non-inverting input is critical. In applications where many inputs are to be summed together, it is important to remember that although each input may be at unity gain, the overall gain of the summing amplifier is higher. If the non-inverting inputs are terminated far from the signal sources being summed and noise is coupled into this junction, the noise is amplified by the overall gain of the summing amp. The 994Enh is the lowest noise discrete operational amplifier available, but poor layout, grounding or system architecture can defeat this advantage.

Long summing busses create stray capacitance at the inverting input, resulting in phase-shift of the feedback signal. When the capacitance becomes excessive, this will cause the summing amplifier to oscillate at ultra-high frequencies. Capacitance can be added across RFB (Cx) to limit the high frequency response. Additionally Riso-Liso can be inserted between the summing buss and the inverting input. It maintains normal audio performance by providing a low impedance throughout the audio bandwidth, while isolating stray capacitance by providing high impedance at ultra-high frequencies.



## Model 994Enh-Ticha Dual Matched LV Variant Discrete Operational Amplifier

### Typical Applications (continued)

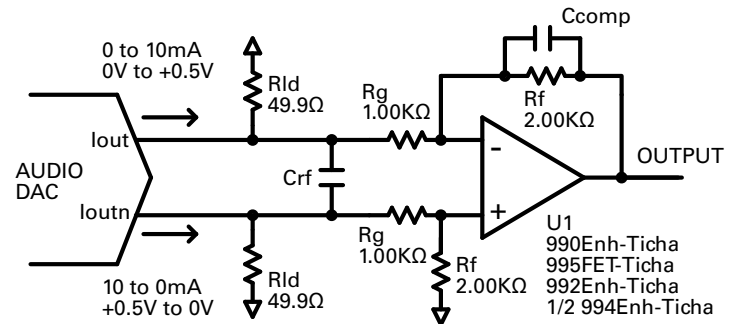
The design of the current to voltage convertor for audio DACs is very important in order to actually realize the high S/N ratio of which 16 and 24bit DACs are capable. This is because noise and distortion that are generated in this area are not negligible. Dynamic performance such as the gain bandwidth, settling time, and slew rate of the operational amplifier affects the audio dynamic performance of the I/V section.

The Sonic Imagery Labs 99X-Ticha series discrete opamp is the heart of the current to voltage convertor amplifier shown in Figure 1. The analog output of a DAC may be a voltage or a current. In either case it may be important to know the output impedance. If the voltage output is buffered, the output impedance will be low. Both current outputs and unbuffered voltage outputs of DACs will be high(er) impedance and may well have a reactive component specified as well as a purely resistive one. Some DAC architectures have output structures where the output impedance is a function of the digital code on the DAC—this should be clearly noted on the data sheet.

In theory, current outputs should be connected to zero ohms at ground potential. In real life they will work with non-zero impedances and voltages. Just how much deviation they will tolerate is defined under the DACs data sheet heading “compliance” and this specification should be heeded when terminating current-output DACs.

Most DACs suitable for high performance audio, have current outputs which are designed to drive source and load-terminated amplifiers as shown in this application note. For instance, a 10-mA current output DAC can develop 0.5 V across a 49.9-Ω load. Modern current output DACs usually have differential outputs, to achieve high common-mode rejection and reduce the even-order distortion products. Fullscale output currents in the range of 2 mA to 30 mA are common. In many cases, both true and complementary current outputs are available. The differential outputs can drive the opamp directly. This method will often give better distortion performance at high frequencies than simply taking the output signal directly from one of the DAC current outputs and grounding the other.

A Sonic Imagery Labs 99X-Ticha discrete opamp connected as a differential to single-ended converter can be used to obtain a



**Figure 4. Differential DC Coupled Output Using the Sonic Imagery Labs 99X-Ticha Series discrete Op Amp**

single-ended output when frequency response to dc is required. In **Figure 4** the 99X-Ticha op amp is used to achieve high bandwidth and low distortion.

The current output DAC drives balanced 49.9-Ω resistive loads, thereby developing an out-of-phase voltage of 0 to +0.5 V at each output. This technique is used in lieu of a direct I/V conversion to prevent fast slewing DAC currents from overloading the amplifier and introducing distortion. The Sonic Imagery Labs 99X-Ticha discrete opamp in **Figure 4** is configured for a gain of 2, to develop a final single-ended ground-referenced output voltage of 2-V p-p.  $R_f$  and  $R_g$  set ac voltage gain of the op-amp. Whereas,  $R_f/R_g=Av$ ,  $20\log Av=Gain_{dB}$ . Other values can be chosen depending on gain desired. Note that because the output signal swings above and below ground, a dual-supply op amp is required.

The  $C_{rf}$  capacitor forms a differential filter with the equivalent 100-Ω differential output impedance. This filter reduces any slew-induced distortion of the op amp, and the optimum cutoff frequency of the filter is determined empirically to give the best overall distortion performance. A starting point value can be calculated;  $f_{3db} = 1/2\pi \cdot 100\ \Omega \cdot C_{rf}$ .

The  $C_{comp}$  capacitor provides phase-lead compensation and sets the upper frequency -3dB bandwidth cutoff point. In addition, the differential amplifiers  $C_{rf}$  combined with  $C_{comp}$  properly selected provide a low-pass filter function.

The reader is encouraged to download Sonic Imagery Labs Application Note AN-12 for more information on interfacing to Digital to Analog convertors.

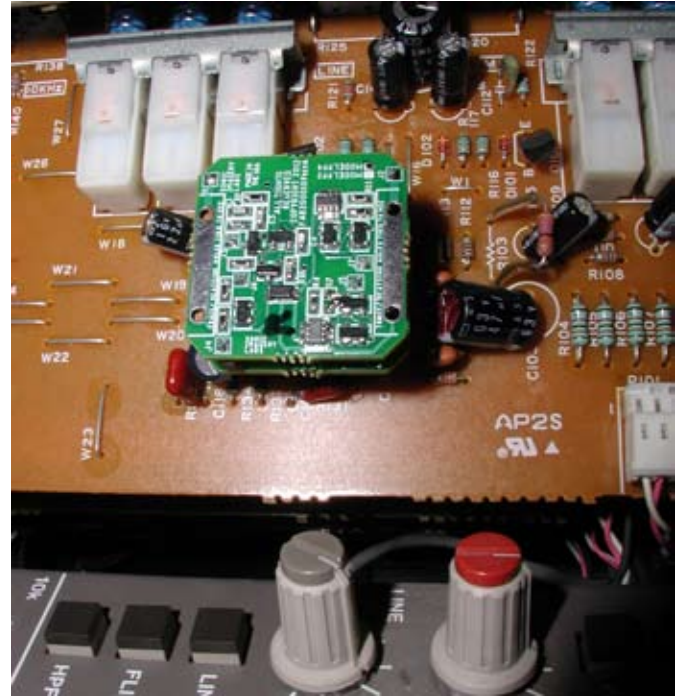
## Model 994Enh-Ticha Dual Matched LV Variant Discrete Operational Amplifier

### Typical Applications (continued)

The previous applications focused on technical situations a designer might find themselves faced with that requires some technical cognizance while designing new projects.

A trend that has come into vogue during the DIY resurgence of the last few years is the rebuilding, refurbishing or “reamping” of audio gear. The 99X series of op-amps is perfectly suited for this trend and in most cases can simply be dropped into existing sockets. Because the 99X series of opamps electrical specifications are typically superior to older monolithic devices, can operate over a wider range of supply rails, and is a true opamp, the user is typically not required to modify the existing support circuitry.

In most cases, if the existing circuitry surrounding the operational amplifier was originally designed correctly, and with particular emphasis on low noise and low distortion audio performance, “reamping” with a 99X series discrete opamp will improve those specifications.



**Image 3. The “reamping” of a Tascam M3700 mixer preamp section using a Sonic Imagery Labs 994-Ticha discrete opamp.**

THE CONTENTS OF THIS DOCUMENT ARE PROVIDED IN CONNECTION WITH Sonic Imagery Labs PRODUCTS. Sonic Imagery Labs MAKES NO REPRESENTATIONS OR WARRANTIES WITH RESPECT TO THE ACCURACY OR COMPLETENESS OF THE CONTENTS OF THIS PUBLICATION AND RESERVES THE RIGHT TO MAKE CHANGES TO SPECIFICATIONS AND PRODUCT DESCRIPTIONS AT ANY TIME WITHOUT NOTICE. NO LICENSE, WHETHER EXPRESS, IMPLIED, ARISING BY ESTOPPEL OR OTHERWISE, TO ANY INTELLECTUAL PROPERTY RIGHTS IS GRANTED BY THIS DOCUMENT.

TESTING AND OTHER QUALITY CONTROLS ARE USED TO THE EXTENT Sonic Imagery Labs DEEMS NECESSARY TO SUPPORT Sonic Imagery Labs PRODUCT WARRANTY. TESTING OF ALL PUBLISHED PARAMETERS AND SPECIFICATIONS OF EACH PRODUCT IS PERFORMED BEFORE SHIPMENT. Sonic Imagery Labs ASSUMES NO LIABILITY FOR APPLICATIONS ASSISTANCE OR BUYER PRODUCT DESIGN. BUYERS ARE RESPONSIBLE FOR THEIR PRODUCTS AND APPLICATIONS USING Sonic Imagery Labs PRODUCTS. PRIOR TO USING OR DISTRIBUTING ANY PRODUCTS THAT INCLUDE Sonic Imagery Labs COMPONENTS, BUYERS SHOULD PROVIDE ADEQUATE DESIGN, TESTING AND OPERATING SAFEGUARDS.

EXCEPT AS PROVIDED IN Sonic Imagery Labs TERMS AND CONDITIONS OF SALE FOR SUCH PRODUCTS, Sonic Imagery Labs ASSUMES NO LIABILITY WHATSOEVER, AND Sonic Imagery Labs DISCLAIMS ANY EXPRESS OR IMPLIED WARRANTY RELATING TO THE SALE AND/OR USE OF Sonic Imagery Labs PRODUCTS INCLUDING LIABILITY OR WARRANTIES RELATING TO FITNESS FOR A PARTICULAR PURPOSE, MERCHANTABILITY, OR INFRINGEMENT OF ANY PATENT, COPYRIGHT OR OTHER INTELLECTUAL PROPERTY RIGHT.

#### **LIFE SUPPORT AND CRITICAL COMPONENTS POLICY**

Sonic Imagery Labs PRODUCTS ARE NOT AUTHORIZED FOR USE AS CRITICAL COMPONENTS IN LIFE SUPPORT DEVICES OR CRITICAL SYSTEMS WITHOUT THE EXPRESS PRIOR WRITTEN APPROVAL OF THE CHIEF EXECUTIVE OFFICER AND GENERAL COUNSEL OF Sonic Imagery Labs. As used herein:

Life support devices or systems are devices which (a) are intended for surgical implant into the body, or (b) support or sustain life and whose failure to perform when properly used in accordance with instructions for use provided in the labeling can be reasonably expected to result in a significant injury to the user. A critical component is any component in a life support device or system whose failure to perform can be reasonably expected to cause the failure of the life support device or system or to affect its safety or effectiveness.